

OPUS-7800

Series

Central Pay-on-Foot Station



Shown with optional EMV Terminal.

The OPUS-7800 Series Central Pay-on-Foot Station was designed for flexibility and ease of use in any facility. The fully functional, touch screen controlled device is the perfect solution for 24/7 unattended operations. The Central Pay-on-Foot Station processes encrypted 2D data matrix barcode tickets from the OPUS-2000/2700 Series Entry Terminals. Payment options include credit card, bills and coins. Mobile and printed barcode validations can also be processed through the optional FlexScan QR400® barcode imager.

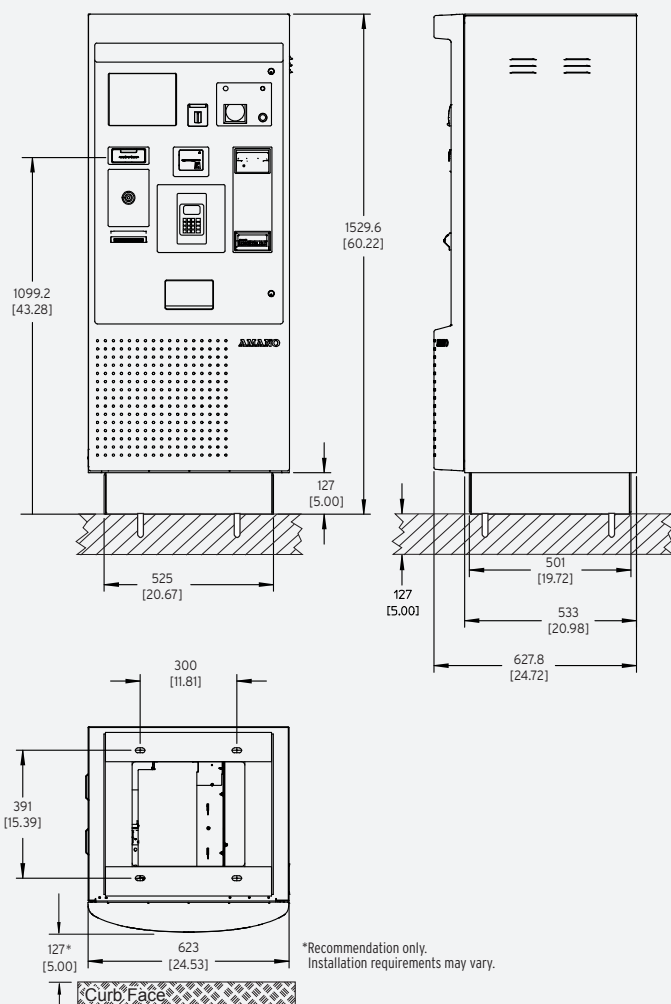
Features

- Models include standard magstripe (MSR) or EMV-capable MSR/chip terminal versions
- 10.4" color touch screen display - sunlight readable
- Coin and bill recycling
- Encrypted 2D data matrix barcode tickets
- Voice announcement
- Thermal receipt printer with auto retract
- Motion sensor arming
- Credential tracking and redundancy support
- Illuminated components for ease of use
- TCP/IP network connectivity
- Supports online and offline fee calculation
- Textured powder coat finish
- FlexScan QR400 barcode imager optional
- Integrated intercom, multiple vendor kits optional
- Integrated IP camera optional
- Lost ticket kit optional

OPUSSeries®

OPUS-7800 Series

Central Pay-on-Foot Station



SPECIFICATIONS

COMPLIANCE

RoHS Compliant

OPUS-7800 Central Pay-on-Foot Station does not store credit card data

Meets ADA (Americans with Disabilities Act) and ANSI (American National Standards Institute) requirements

ELECTRICAL

Power Source: 120 VAC, 60 Hz

Utilization: 12 amp maximum

TIME CONTROL

Real-time clock synchronization with host computer

ENVIRONMENT

Temperature: -20°F ~ 120°F (-29°C ~ 49°C)
Automatic thermostat-controlled heater included

Humidity: 10% ~ 90% (non-condensing)

HOUSING

Height: 60.22" (152.9 cm)

Width: 24.53" (62.3 cm)

Depth: 24.72" (62.7 cm)

Weight: 390 lbs. (177 kg)

Construction: Sheet steel housing

Cabinet finish: Textured powder coat finish OPUS (RAL#7022);
custom color available

Door finish: Metal door with painted molded plastic overlay

TICKET READER/ENCODER (REPM)

200 dpi non-contact thermal write head

Easy ticket jam removal

Encodes encrypted 2D data matrix barcode data and transaction data in
man-readable text

RECEIPT PRINTER

High speed thermal line dot

8" thermal paper roll

Auto retract

FLEXSCAN QR400 BARCODE IMAGER KIT OPTION

Opening: 5"W x 2.6"H (12.7 cm x 6.6 cm)

Barcode Types: 1D (Linear) & 2D (QR)

Ambient Light: Total darkness to 9000 ft. candles (96,900 LUX)

OPTIONS

Proximity Reader Kit

TCP/IP security camera

Lost ticket kit

SECURITY

Multi-point safety lock system

Intruder alarm

Security locks on money handling compartments

INTERCOM

Aiphone™ LEF series intercom system standard, additional options available

Standard voice announcement

Specifications are approximate and are subject to change without notice.

