

# OPUS-7700

Series

## Pay-in-Lane Exit Station



Shown with optional EMV Terminal.

The OPUS-7700 Series Pay-in-Lane Exit Station was designed for flexibility and ease of use in any facility. The fully functional, touch screen controlled device is the perfect solution for 24/7 unattended operations. The Pay-in-Lane Exit Station processes encrypted 2D data matrix barcode tickets from the OPUS-2000/2700 Series Entry Terminals. Payment options include credit card, bills and coins. Other payment options include credit card out for credit card in/out applications when used online and in conjunction with an OPUS-2700 Entry Terminal. Mobile credentials and printed barcode validations can also be processed through the optional FlexScan QR400® barcode imager. The OPUS-7700 Series also supports an optional integrated proximity kit.

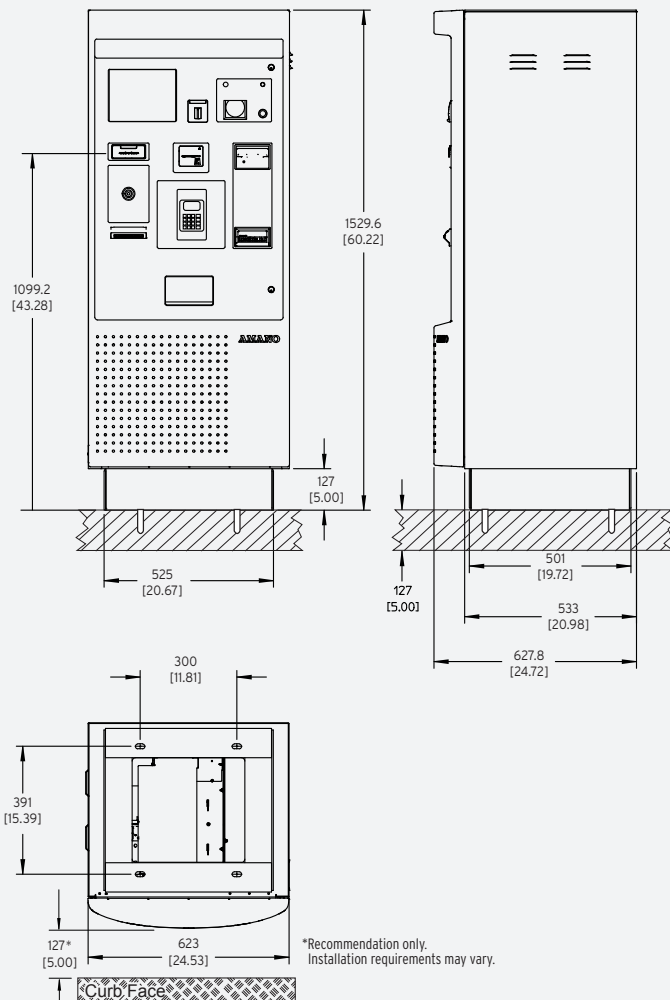
### Features

- Models include standard magstripe (MSR) or EMV-capable MSR/chip terminal versions
- 10.4" color touch screen display - sunlight readable
- Coin and bill recycling
- Encrypted 2D data matrix barcode tickets
- Voice announcement
- Thermal receipt printer with auto retract
- Credential tracking and redundancy support
- Illuminated components for ease of use
- TCP/IP network connectivity
- Supports online and offline fee calculation
- Textured powder coat finish
- FlexScan QR400 barcode imager optional
- Integrated intercom, multiple vendor kits optional
- Integrated IP camera optional

**OPUS**Series®

# OPUS-7700 Series

## Pay-in-Lane Exit Station



### SPECIFICATIONS

#### COMPLIANCE

##### RoHS Compliant

OPUS-7700 Pay-in-Lane Exit Station does not store credit card data

Meets ADA (Americans with Disabilities Act) and ANSI (American National Standards Institute) requirements

#### ELECTRICAL

**Power Source:** 120 VAC, 60 Hz

**Utilization:** 12 amp maximum

#### TIME CONTROL

Real-time clock synchronization with host computer

#### ENVIRONMENT

**Temperature:** -20°F ~ 120°F (-29°C ~ 49°C)  
Automatic thermostat-controlled heater included

**Humidity:** 10% ~ 90% (non-condensing)

#### HOUSING

**Height:** 60.22" (152.9 cm)

**Width:** 24.53" (62.3 cm)

**Depth:** 24.72" (62.7 cm)

**Weight:** 390 lbs. (177 kg)

**Construction:** Sheet steel housing

**Cabinet finish:** Textured powder coat finish OPUS (RAL#7022);  
custom color available

**Door finish:** Metal door with painted molded plastic overlay

#### TICKET READER/ENCODER (REPM)

200 dpi non-contact thermal write head

Easy ticket jam removal

Encodes encrypted 2D data matrix barcode data and transaction data in  
man-readable text

Vaults used exit tickets

Stores electronic ticket image (optional), patent pending

#### RECEIPT PRINTER

High speed thermal line dot

8" thermal paper roll

Auto retract

#### FLEXSCAN QR400 BARCODE IMAGER KIT OPTION

**Opening:** 5"W x 2.6"H (12.7 cm x 6.6 cm)

**Barcode Types:** 1D (Linear) & 2D (QR)

**Ambient Light:** Total darkness to 9000 ft. candles (96,900 LUX)

#### OPTIONS

Proximity access reader kit

TCP/IP security camera

#### SECURITY

Multi-point safety lock system

Intruder alarm

Security locks on money handling compartments

#### INTERCOM

Aiphone™ LEF series intercom system standard, additional options available

Standard voice announcement

Specifications are approximate and are subject to change without notice.

