

OPUS-4800 Series

Credit Card Pay-on-Foot Station



Shown with optional EMV Terminal.

The OPUS-4800 Series Credit Card Pay-on-Foot Station utilizes innovative technology and an encrypted 2D data matrix barcode for expedited payment in parking facilities. The OPUS-4800 Series offers intuitive user guidance through a dynamic color display, motion sensor arming and voice announcement. The Credit Card Pay-on-Foot Station processes encrypted thermal 2D barcode tickets from the OPUS-2000/2700 Series Entry Terminals. Payment is by credit card. Mobile and printed barcode validations can be processed through the optional FlexScan QR400® barcode imager.

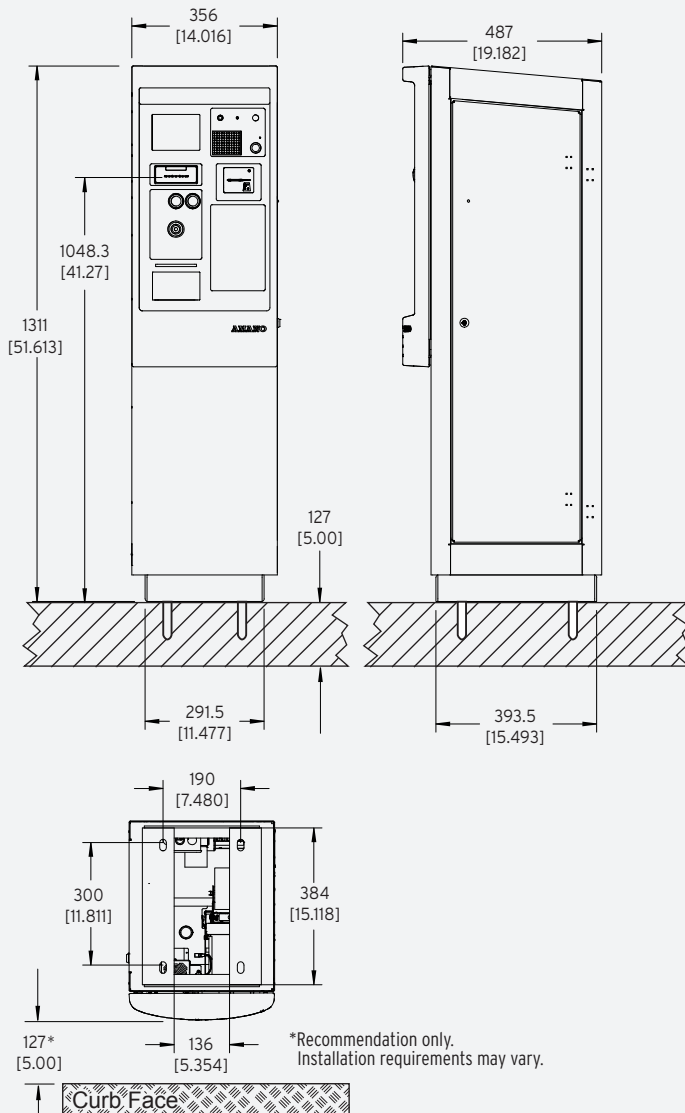
Features

- Models include standard magstripe (MSR) or EMV-capable MSR/chip terminal versions
- Thermal receipt printer with auto retract
- Motion sensor arming
- Encrypted 2D data matrix barcode
- Credential tracking and redundancy support
- Illuminated components for ease of use
- 5.7" color display - sunlight readable
- Voice announcement
- TCP/IP network connectivity
- Textured powder coat finish
- FlexScan QR400 barcode imager optional
- Integrated intercom, multiple vendor kits optional
- Integrated IP camera optional

OPUSSeries®

OPUS-4800 Series

Credit Card Pay-on-Foot Station



SPECIFICATIONS

COMPLIANCE

RoHS Compliant

OPUS-4800 Series equipment does not store credit card data

Meets ADA (Americans with Disabilities Act) and ANSI (American National Standards Institute) requirements

ELECTRICAL

Power Source: 120 VAC, 60 Hz

Utilization: 10 amp maximum (120V)

TIME CONTROL

Real-time clock synchronization with host computer

ENVIRONMENT

Temperature: -20°F ~ 120°F (-29°C ~ 49°C)
Automatic thermostat-controlled heater included

Humidity: 10% ~ 90% (non-condensing)

HOUSING

Heavy-duty, 14-gauge steel construction, weather gasketing, lockable door

Height: 51.6" (131.1 cm)

Width: 14.0" (35.6 cm)

Depth: 19.18" (48.7 cm)

Weight: 140 lbs. (63.5 kg)

Ticket throat: 41" (104 cm)

Finish (Standard): Textured powder coat finish OPUS (RAL#7022); custom color available

TICKET READER/ENCODER (REPM)

200 dpi non-contact thermal write head

Easy ticket jam removal

Encodes encrypted 2D data matrix barcode data and transaction data in man-readable text

RECEIPT PRINTER

High speed thermal line dot

8" thermal paper roll

Auto-retract

FLEXSCAN QR400 BARCODE IMAGER KIT OPTION

Opening: 5"W x 2.6"H (12.7 cm x 6.6 cm)

Barcode Types: 1D (Linear) & 2D (QR)

Ambient Light: Total darkness to 9000 ft. candles (96.900 LUX)

OPTIONS

TCP/IP security camera

INTERCOM

Aiphone™ LEF series intercom system standard, additional options available

Standard voice announcement

Specifications are approximate and are subject to change without notice.

