

## OPUS-4700 Series

## Credit Card Exit Terminal



Shown with optional EMV Terminal.

The OPUS-4700 Series Credit Card Exit Terminal utilizes innovative technology and an encrypted 2D data matrix barcode for expedited exit from parking facilities. The OPUS-4700 Series offers intuitive user guidance through a dynamic color display and voice announcement. The Exit Terminal processes encrypted thermal 2D barcode tickets from the OPUS-2000/2700 Series Entry Terminals, OPUS-4800 Credit Card Pay-on-Foot Station, OPUS-7800 Central Pay-on-Foot Station or OPUS-5000 Series Central Cashier POS Terminal. Additional options include credit card out for credit card in/out applications when used online and in conjunction with an OPUS-2700 Entry Terminal. Mobile credentials and printed barcode passes can be processed through the optional FlexScan QR400® barcode imager. The OPUS-4700 Series also supports an optional integrated proximity kit.

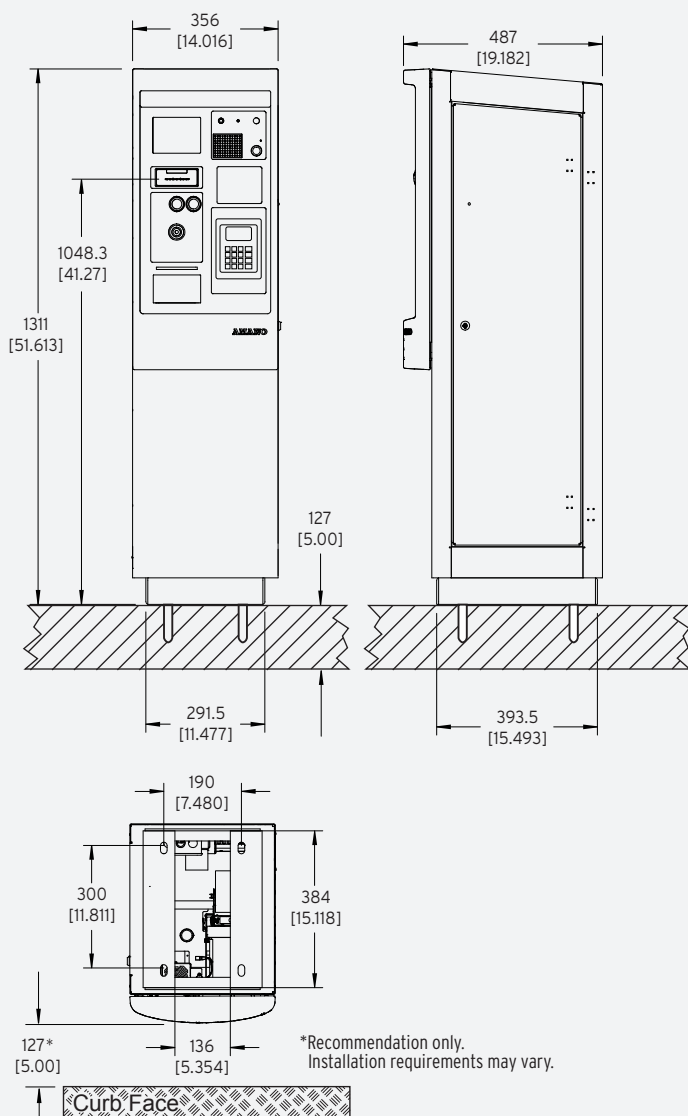
### Features

- Models include standard magstripe (MSR) or EMV-capable MSR/chip terminal versions
- Rapid exit delivers increased throughput
- Encrypted 2D data matrix barcode
- Credential tracking and redundancy support
- Illuminated components for ease of use
- 5.7" color display - sunlight readable
- Voice announcement
- TCP/IP network connectivity
- Thermal receipt printer with auto retract
- Textured powder coat finish
- Integrated proximity reader optional
- FlexScan QR400 barcode imager optional
- Integrated intercom, multiple vendor kits optional
- Integrated IP camera optional

**OPUS**Series®

# OPUS-4700 Series

## Credit Card Exit Terminal



## SPECIFICATIONS

### COMPLIANCE

#### RoHS Compliant

The OPUS-4700 does not store credit card data

Meets ADA (Americans with Disabilities Act) and ANSI (American National Standards Institute) requirements

### ELECTRICAL

**Power Source:** 120 VAC, 60 Hz

**Utilization:** 10 amp maximum (120V)

### TIME CONTROL

Real-time clock synchronization with host computer

### ENVIRONMENT

**Temperature:** -20°F ~ 120°F (-29°C ~ 49°C)  
Automatic thermostat-controlled heater included

**Humidity:** 10% ~ 90% (non-condensing)

### HOUSING

Heavy-duty, 14-gauge steel construction, weather gasketing, lockable door

**Height:** 51.6" (131.1 cm)

**Width:** 14.0" (35.6 cm)

**Depth:** 19.18" (48.7 cm)

**Weight:** 140 lbs. (63.5 kg)

**Ticket throat:** 41" (104 cm)

**Finish (Standard):** Textured powder coat finish OPUS (RAL#7022); custom color available

### TICKET READER/ENCODER (REPM)

200 dpi non-contact thermal write head

Easy ticket jam removal

Encodes encrypted 2D data matrix barcode data and transaction data in man-readable text

Vaults used exit tickets

Stores electronic ticket image (optional), patent pending

### RECEIPT PRINTER

High speed thermal line dot

8" thermal paper roll

Auto retract

### FLEXSCAN QR400 BARCODE IMAGER KIT OPTION

**Opening:** 5"W x 2.6"H (12.7 cm x 6.6 cm)

**Barcode Types:** 1D (Linear) & 2D (QR)

**Ambient Light:** Total darkness to 9000 ft. candles (96.900 LUX)

### OPTIONS

Proximity access reader kit

TCP/IP security camera

### INTERCOM

iPhone™ LEF series intercom system standard, additional options available

Standard voice announcement

Specifications are approximate and are subject to change without notice.

